

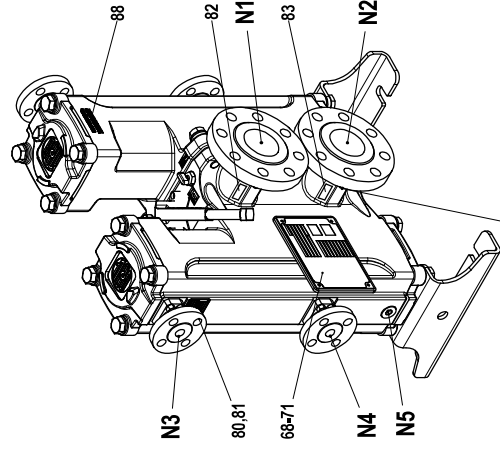
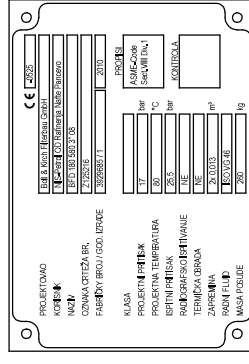
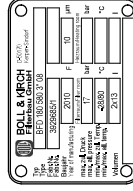
N1	FILTEREINTRITT FILTER INLET	3° Class-300 ASME B16.5
N2	FILTERAUSGANG FILTER OUTLET	3° Class-300 ASME B16.5
N3	ENTLÜFTUNG AIR ESCAPE	3/4" Class-300 ASME B16.5
N4	ENTLÜFTERUNG DRAIN	3/4" Class-300 ASME B16.5
N5	RESTENTLÜFERUNG TOTAL DRAIN	G3/4"
S	ELEMENTAUSBAU DISMOUNTING OF THE FILTER ELEMENT	
	BERECHNUNGSÜBERDRUCK 17 BAR	
	DESIGN PRESSURE	
	BERECHNUNGSTEMPÉRATUR 80°C	
	TEMPERATURE	

**S ELEMENTAUSBAU**  
DISMOUNTING OF THE FILTERELEMENT  
**BERECHN. ÜBERDRUCK 17 BAR**  
DESIGN PRESSURE  
**BERECHN. TEMPERATUR 80°C**  
DESIGN TEMPERATURE

**VOLUMEN 2x13 L**  
VOLUME

**LEERGEWICHT 260 KG**  
EMPTY WEIGHT

**ÄNDERUNGEN VORBEHALTEN**  
SUBJECT TO ALTERATIONS



Anzugsdrehmomente (Nm) für Deckel- und Gehäuse-Schraubverbindungen (Pos.30,31)  
tightening torque (Nm) for cover- and casing screw connection

BFD	Grösse / size	Werkstoff / material
		8.8
		SA-193

[illegible]